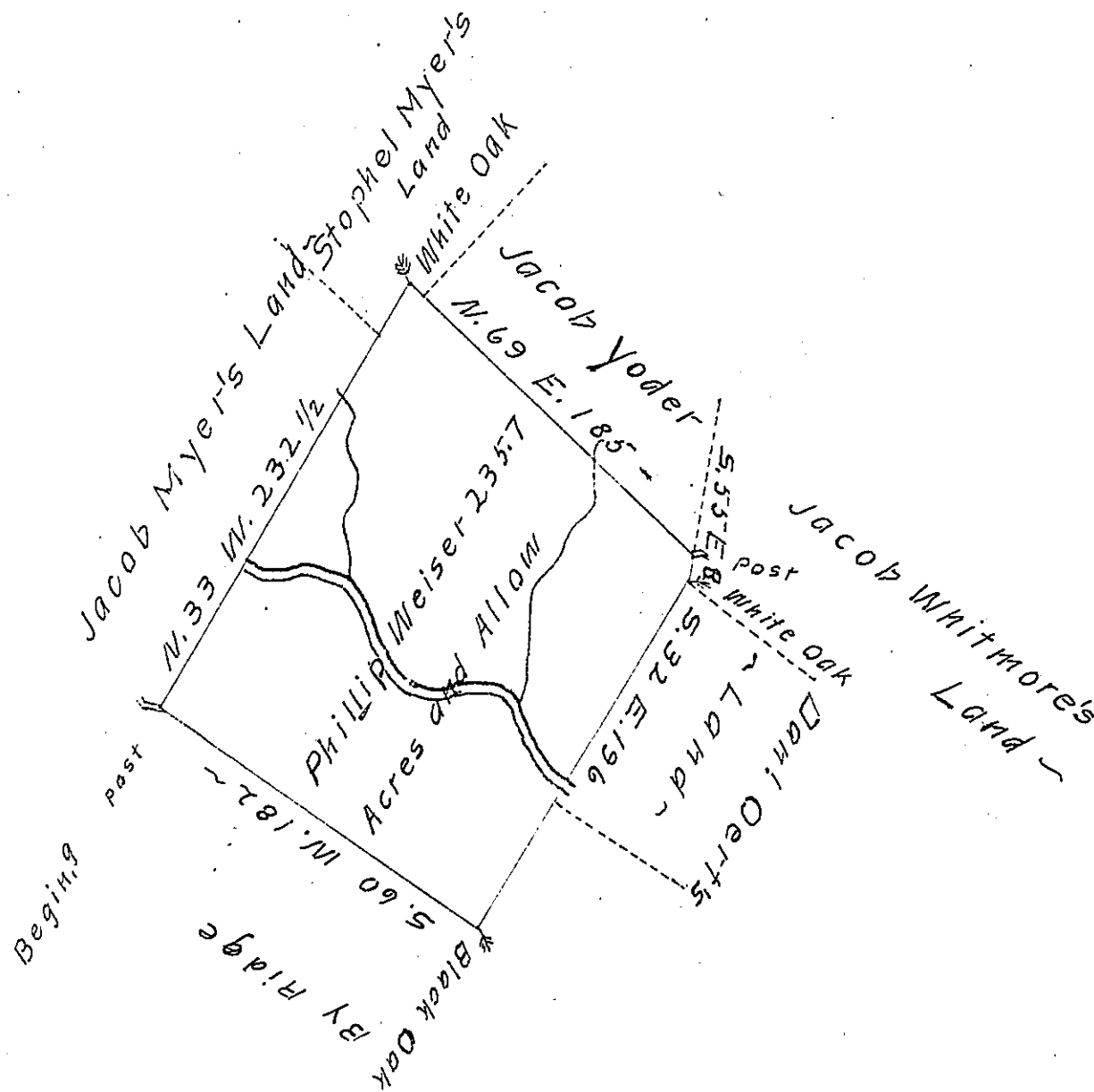


FORM NO. 1.



The Draught of a Tract of Land called Heilbrun situate in the Dutch Valey Cumberland County containing Two Hundred thirty Five Acres 119 Perches with the usual Allowance of Six Acres $\frac{1}{2}$ Cent. for Roads. Resurvey'd the 2^d day of May Anno Dom: 1767 In Pursuance of a Warrant from the Hon^{ble} Proprietaries to Phillip Weiser Bearing Date at Philad^a the 14th day of March Anno Dom: 1755 —

$\frac{1}{2}$ W^m Maclay D.S.

To John Lukens Esq S. E. }
of Pennsylvania }

IN TESTIMONY that the above is a copy of the original remaining on file in the Department of Internal Affairs of Pennsylvania, made conformably to an Act of Assembly approved the 16th day of February 1833, I have hereunto set my hand and caused the Seal of said Department to be affixed at Harrisburg, this 27th day of August 1907

Henry Houck
Secretary of Internal Affairs.